

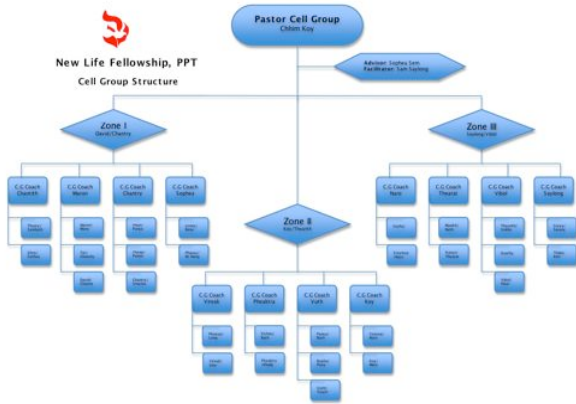


# New Life Fellowship, Phnom Penh Thmey

Relief and Development, Evangelism, Discipleship, Leadership Training, Church Planting

## Cell Group Structure, April 27, 2010

April 21, 2010



*We have also restructured our cell group ministry in our church, as we have a growing number of cell groups springing up and also a number of new, young leaders coming up who need trained and shepherded. Last year, we split our cell groups into three 'zones' under 3 of our main leaders. We have now enlisted 4 'coaches' within each of these zones to further encourage and shepherd new leaders, as well as to train up new leaders in preparation for further growth.*

*We want to be a church where nobody stands alone.*

*Each of these zones has a goal of planting 4 new cell groups before the end of this year! There is so much potential for growth! But there is a need to be responsible for preparing and training and caring for the 'shepherds' who will be caring for this growth! These leaders are also the key to leading the church forward. For example, we see a need to bring the church to a new level in the area of prayer. Cell groups is a tool that we can use to bring this about. If we only preach on Sunday mornings to the big group, we will lose many as we move forward. They will not be brought along with us. But we have prepared a series of lessons to cover the next two months, with many practical lessons about prayer, which the cell group leaders will take and share in their small groups, alongside of the Sunday morning sermon series. In the cell group setting, the leaders can deal with the individual weaknesses, questions, and habits of their cell group members to help them develop a successful personal prayer life! In this way we can shepherd and lead the church forward together, successfully bringing each member along with us! Please keep our leaders in your prayers.*



*Thank you for your prayers and support.*

*Sopheha and the team*